

Trinity Sunday May 30, 2010

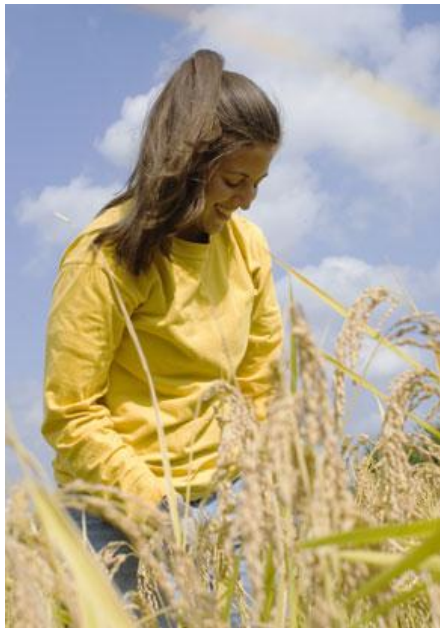
Offering a special welcome to

Steve Cutting

of the

Asian Rural Institute (ARI)

Believing that all God's people have the capability and resources to live healthy and dignified lives, ARI offers an educational program for sustainable agriculture, leadership, and community development.



An American student from Presbyterian College volunteering at ARI.

Lord, the air smells good today,
straight from the mysteries
within

the garden
of God.

The trees in their prayer,
the birds in praise,
the first blue violets,
kneeling.

— Rumi

The Other Evangelical Evangelical United Church of Christ

Following the God
made known in the life
and teachings of Jesus...

WELCOME AND ANNOUNCEMENTS

PRELUDE

OPENING WORDS

One: I thank You God for most this amazing
day: for leaping greenly spirits of trees
and a blue true dream of sky; and for everything
which is natural which is infinite which is yes

— e.e. cummings, North America

*HYMN

“For the Beauty of the Earth”

tune: Dix
words: Pierpoint

**For the beauty of the earth
For the glory of the skies,
For the love which from our birth
Over and around us lies.**

Refrain

**God of love, to you we raise,
This our hymn of grateful praise.**

**For the beauty of each hour,
Of the day and of the night,
Hill and vale, and tree and flower,
Sun and moon, and stars of light.**

Refrain

**For the joy of human love,
Brother, sister, parent, child,
Friends on earth and friends above,
For all gentle thoughts and mild.**

Refrain

*LITANY

“The Wisdom to Survive”

source: Wendell Berry

One: If we will have the wisdom to survive,
to stand like slow-growing trees on a ruined place,

Many: **Renewing, enriching it,**

One: If we will make our seasons welcome here,
asking not too much of earth or of heaven,

Many: **Then a long time after we are dead
the lives our lives prepare will live here,**

One: Their houses strongly placed upon the valley sides,

Many: **Fields and gardens rich in the windows.
The river will run clear as we will never know it.**



Welcome!

A word about diversity:

We strive to be a safe place for all people to worship regardless of race, creed, age, cultural background, sexual orientation or gender identity.

A word about children:

We love children, babies, and teens and we welcome all ages to share worship with us. Professional childcare is available throughout the morning for those who prefer. Activity folders (available in the Narthex) allow children of all ages to respond creatively to worship. A playtime for preschool age children is offered after the Chancel Steps at the 11:00 a.m. service.

A word about special needs:

We are committed to making our worship service as accessible as possible. We offer special hearing devices, accessible seating, and other services as requested. Please let us know how we can help make this worship experience more accessible.

One: And over it, birdsong like a canopy.

Many: **On the levels of the hills will be green meadows, stock bells in noon shade.**

One: On the steeps where greed and ignorance cut down the old forest,

Many: **An old forest will stand, its rich leaf-fall drifting on its roots.**

One: The veins of forgotten springs will have opened.
Families will be singing in the fields.

Many: **In their voices they will hear a music risen out of the ground.**

One: They will take nothing from the ground they will not return,
whatever the grief at parting.
Memory, native to this valley, will spread over it like a grove,
and memory will grow into legend, legend into song, song into sacrament.
The abundance of this place, the songs of its people and its birds,
will be health and wisdom and indwelling light.

Many: **This is no impossible dream. Its hardship is its possibility.**

*RESPONSE

"O Great Earth"

source: Linnea Good

O Great Earth so green and so blue, This is the
 prom-ise that I'll make to you: To care for your an - i - mals, for
 an - i - mals can hear the rhy - thm of your
 heart - beat

2.

Oh Great Earth so green and so blue
This is the promise that I'll make to you
To care for your landscapes for
landscapes can hear
The rhythm of your heartbeat

4.

Oh Great Earth so green and so blue
This is the promise that I'll make to you
To care for your willows for willows can
hear
The rhythm of your heartbeat

3.

Oh Great Earth so green and so blue
This is the promise that I'll make to you
To care for your waters for waters can
hear
The rhythm of your heartbeat

5.

Oh Great Earth so green and so blue
This is the promise that I'll make to you
To care for your sky scapes for sky
scapes can hear
The rhythm of your heartbeat

6.

Oh Great Earth so green and so blue
This is the promise that I'll make to you
To care for your people for people can hear
The rhythm of your heartbeat
The rhythm of your heartbeat
The rhythm of your heartbeat

Special thanks to www.processandfaith.org for their Earth Day Service that provided resources for this service. Sources for words, images, and music are noted where available. Unless otherwise noted, all hymn tunes are arranged and printed by Donita Bauer. Permission to reprint music and words from sources other than The New Century Hymnal is granted under OneLicense.net, license no. A-704973.

SCRIPTURE

Psalm 8

O Lord, our Master, how mighty is Your name in all the earth, for which You should bestow Your majesty upon the heavens. Out of the mouth of babes and sucklings You have established strength because of Your adversaries, in order to put an end to enemy and avenger. When I see Your heavens, the work of Your fingers, the moon and stars that You have established...what is man that You should remember him, and the son of man that You should be mindful of him. Yet You have made him slightly less than the angels, and You have crowned him with glory and majesty. You give him dominion over the work of Your hands; You have placed everything beneath his feet. Flocks and cattle, all of them, and also the beasts of the field; the birds of the sky and the fish of the sea, he traverses the ways of the seas. O Lord, our Master, how mighty is Your name in all the earth!

CHANCEL STEPS

"Brother Eagle, Sister Sky"

Susan Jeffers

Children are invited to come to the Chancel Steps to share a story.

Following the story, young children may choose to go to the nursery (both services) or to Shepherds (11:00am—a play time in the Red Room downstairs).

ANTHEM

8:30AM

Special Music
Bassoons

11:00AM

"True Light"
Chancel Choir

Hampton

SERMON

***HYMN 569**

"Touch the Earth Lightly"

Steve Cutting

tune: Tenderness
words: Murray



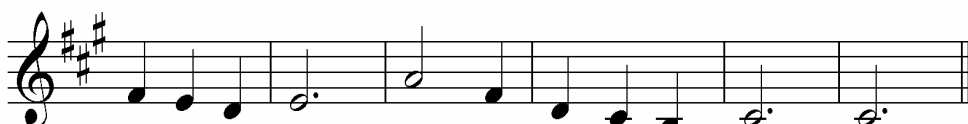
Touch the earth light - ly, use the earth gent - ly,
*We who en - dan - ger, who cre - ate hun - ger,
Let there be green - ing, birth from the burn - ing,
God of all liv - ing, God of all lov - ing,



nour-ish the life of the world in our care:___
a - gents of death for all crea-tures that live,___
wa - ter that bless - es, and air that is sweet,___
God of the seed - ling, the snow, and the sun,___



Gift of great won - der, ours to sur - ren - der,
We who would fos - ter clouds of dis - as - ter
Health in God's gar - den, hope in God's chil - dren,
Teach us, de - flect us, Christ re-con - nect us,



trust for the chil - dren to - mor-row will bear. ___
God of our plan - et, for - stall and for - give! ___
re-gen-er - a - tion that peace will com - plete. ___
us-ing us gent - ly, and mak-ing us one. ___



The Celtic tradition invites us to look with the inner eye. In all people, in all places, in every created thing the light of God is shining.

J. Philip Newell

Sustainability: Meeting the needs of the present without compromising the ability of future generations to meet their own needs.

It is my intention for the Earth
That the air be clear,
That the water be pure,
That the ground be nurturing,
That all living things
Exist in harmony and balance.
May we and our descendants
walk in beauty all of our lives.

Frank Saxton



In our Prayers



Sharing our Gifts

During our Procession to the Table (8:30am) and Celebration of Giving (11:00am), we are invited to consider our offerings. The easiest way to make a financial offering is to drop check or money, marked clearly for EUCC or for special offerings, in the basket during worship. You can also set up electronic giving, which saves paper—and you never need your checkbook. Please contact the church office for more information.

May Special Offering

The Servant Team of EUCC would like to invite the members of the Congregation to help restore life to women in Africa who have experienced birth trauma. We will do this by supporting the work of our own Lewis Wall and the Worldwide Fistula Fund. Throughout the month of May we will collect donations for this great cause. Please make checks out the EUCC while noting Worldwide Fistula Fund in the memo section. Thank you for your support.

Finances in Brief

For the four month period ending April 30, 2010 the General Fund contributions received were \$98,892, other income was \$5,897 for a total of \$104,789. Expenses were \$99,038. The result is a surplus on April 30 of \$5,751. The weekly average of contributions received was \$6,016. The weekly average needed is \$6,013. Difference is a surplus of \$3 per week.

Ken Ulmer
Finance Team Leader

PRAYERS OF THE PEOPLE

Believing that each joy and/or concern expressed is indeed a prayer, After each expression, the worship leader will say: Lord in your Mercy. And the people may respond: Hear our prayer.

**God, lover of us all, most holy one.
Help us to respond to you.
To create what you want for us here on earth.
Give us today enough for our needs.
Forgive our weak and deliberate offences,
just as we must forgive others when they hurt us.
Help us to resist evil and to do what is good.
For we are yours, endowed with your power
to make our world whole. Amen.**

Lala Winkley

TABLE PRAYER AND PROCESSION TO THE TABLE 8:30 AM

INVITATION, REMEMBRANCE AND BLESSING

**Come, Holy Spirit, come.
Bless this bread and bless this fruit of the vine.
Bless all of us in our eating and drinking
that our eyes might be opened,
that we might recognize the risen Christ in our midst
indeed, in one another. Come, Holy Spirit, come.**

The Congregation is invited to come forward by the center aisle... partaking of the bread and cup, lighting a candle in prayer, and placing an offering in the plates beside the table.

CELEBRATION OF GIVING 11:00 AM

The ushers collect our tithes and offerings to support the work of this community.

Our Special Offering for this month The World Wide Fistula Fund

RESPONSE 514

"Over My Head"

source: traditional

**Over my head, I hear music in the air.
Over my head, I hear music in the air.
Over my head, I hear music in the air,
there must—be a God somewhere.**

Over my head I hear singing in the air...

*PRAYER OF DEDICATION

Many: **May we be reminded here of our highest aspirations,
and inspired to bring our gifts of love and service
to the healing of the Earth.
May we know once again that we are not isolated beings
but connected, in mystery and miracle,
to God, to the universe, to this community and the Earth.**

www.processandfaith.org

***HYMN 17**

"To You, O God, All Creatures Sing"

tune: Lasst Uns Erfreuen
words: St. Francis of Assisi

To you, O God, all crea-tures sing, and
Your flow-ing wa-ters, crys-tal clear, make
To you, O God, day af-ter day, your
all cre-a-tion, ev-ery-thing sings your prais-es, al-le-
mel-o-dies for you to hear, sing your prais-es, al-le-
plan-et earth in ev-ery way, sings your prais-es, al-le-
lu-ia! Your burn-ing sun with gold-en beam, your
lu-ia! Your fire, boun-ti-ful and bright, re-
lu-ia, As sa-vory fruit and fra-grant flower show
sil-ver moon with soft-er gleam sing your prais-es, al-le-
mem-ber-ing your warmth and light, sings your prais-es, al-le-
forth your glo-ry and your power, sing-ing prais-es, al-le-
lu-ia, al-le-lu-ia, al-le-
lu-ia, al-le-lu-ia.

**Wanted:
SUMMER MUSICIANS!!**

If you are interested in sharing your musical gifts at EUCC this summer, Contact Donita Bauer or Jill Thompson.

They will be happy to assist you in finding a date to fit your busy summer schedule.

SUMMER CHOIR!!

Summer Choir will rehearse @ 10:15 and sing @ 11:00 Sundays, June 6th, July 4th, and August 1st. All are welcome to share in Summer Choir!!



***BENEDICTION**

"Wild Geese"

Mary Oliver, adapted

You do not have to be good. You do not have to walk on your knees for a hundred miles through the desert repenting. You only have to let the soft animal of your body love what it loves. Whoever you are, no matter how lonely, the world offers itself to your imagination, calls to you like wild geese, harsh and exciting—over and over announcing your place in the family of things. Go forth knowing your place, answering the call, and loving the Earth

***POSTLUDE**

Bulletin recycling: Though we invite you to take your bulletin home to review the prayers and opportunities throughout the week, if you choose to leave your bulletin after the 8:30am service place it in the blue box and we will use it again!

Church Picnic—June 6th



Following the 11am worship service on June 6th, we will hold our annual **Potluck Picnic** on the lawn of the church. We will provide hot dogs and beverages and ask that you bring a dish to share at this fun family event.

Contemporary Christian Writings Group

Friday, June 18th 6:30pm (EUCC)

Book: Meeting Jesus Again for the First Time by Marcus Borg

Leader: Joe Kelly

Friday, July 16th 6:30pm

Book: God of Jesus: The Historical Jesus and the Search for the Meaning by Steve Patterson

Leader: Wynn Miller

Friday, August 20th 6:30pm

Book: Eternal Life: A New Vision by John Shelby Spong

Leader: Bob Karr

Still Speaking Center...

is our nickname for the 212 Building. How will this building be used by our community and/or the wider community? God is still speaking, and we are doing our best to listen! Our Wellness Advisory Group, our Adult classes, our Youth, and our Governing Body have all been calling this space "home" during our construction. It has literally been our Still Speaking Center...

For Adults at 9:45am TODAY

Join Steve Cutting in the Sanctuary at 9:45am to hear more about the Asia Rural Institute.

Parent Group and Bible Study have both been trumped by the arrival of summer! Please join us again after Labor Day.

Watch this space for announcement of educational offerings during the summer months.



Construction Alert!

Phase One Construction has begun at the Other Evangelical. For the next couple of months, we will have some safety issues to monitor and changes in meeting locations.

Rooms that are being renovated on the South Wall must be emptied and sealed due to lead dust contaminants. With the exception of the Nursery, all of the classrooms have been emptied and have plastic covering the doorways. WE ask that the rooms not be entered. Rooms on the Southeast corner (Katy's office, old library, half of the red and blue rooms) are also being sealed.

So where do you need to go on Sundays to find your meeting or classroom?

Elementary Church School will be in the Fellowship Hall

Preschool Church School and the Shepherds will meet in the open half of the Red Room (unless otherwise announced)

Nursery - after the windows are installed and the old heating tubes removed the Adult Lounge will be thoroughly cleaned and the nursery will move into that space during the renovation.

Parking - during the week, please use the upper lot. The lower lot is the staging area for the construction projects The plan is both that lots will be available on Sunday mornings.

Open meeting space for the next two months will be the Fireside Room and the meeting rooms in the Still Speaking Center (212 Building) **Please be sure to contact Sue to get all meetings and groups on the church calendar.**

Katy's office - will be sealed sometime next week and Katy will work from her laptop and/or from home.

News from Gateway ONA...

Join EUCC along with other UCC friends at the Gateway ONA booth during **Pride St. Louis, June 26-27** (Tower Grove Park). Together with other ONA churches (UCC) in our area, we'll welcome new friends at our booth, march in the parade and celebrate Pride! We need folks to sign up for 2 hour shifts at the booth. This is a great chance to build community AND share God's inclusive embrace with the wider metro community. Volunteer information is available on the table in the narthex or you can sign up by visiting Gateway ONA on Facebook.

ALSO...

Save the Date...

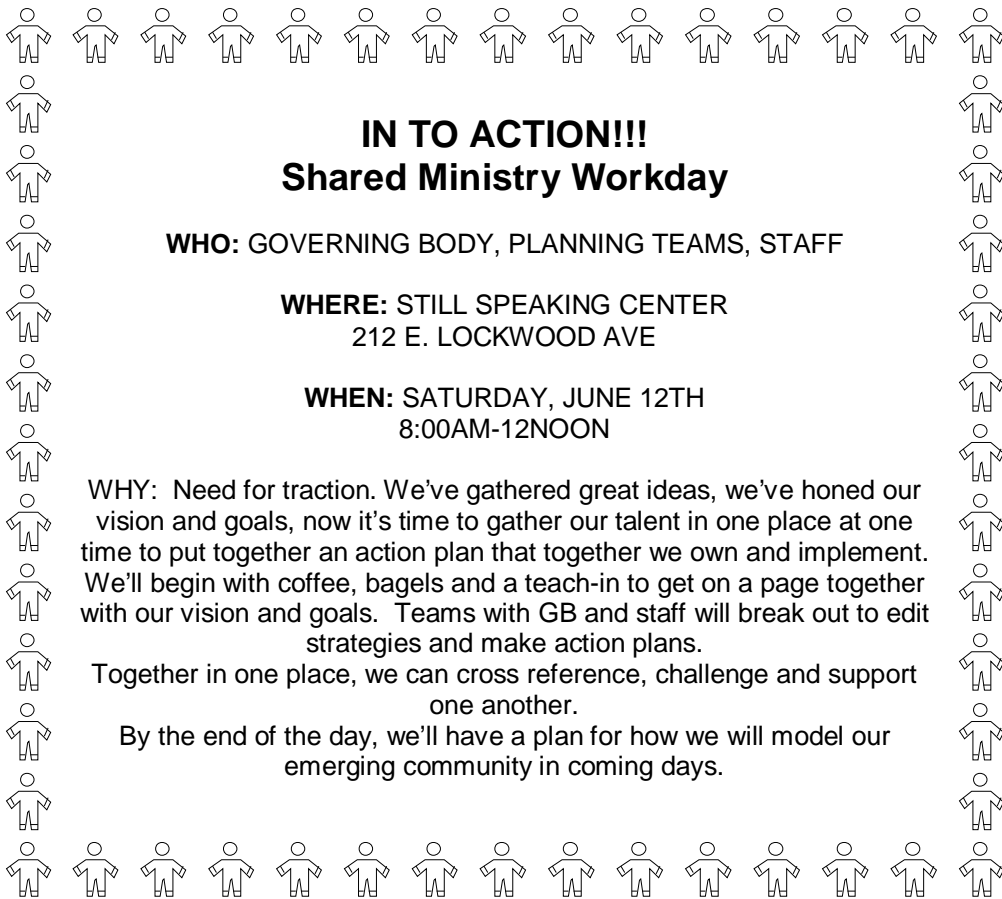
Gateway ONA Picnic

Saturday, August 7th 1pm

Bohrer Park

5705 S. Lindbergh Blvd 63123

Look for details in future bulletins and News and Notes!!!



IN TO ACTION!!! Shared Ministry Workday

WHO: GOVERNING BODY, PLANNING TEAMS, STAFF

WHERE: STILL SPEAKING CENTER
212 E. LOCKWOOD AVE

WHEN: SATURDAY, JUNE 12TH
8:00AM-12NOON

WHY: Need for traction. We've gathered great ideas, we've honed our vision and goals, now it's time to gather our talent in one place at one time to put together an action plan that together we own and implement. We'll begin with coffee, bagels and a teach-in to get on a page together with our vision and goals. Teams with GB and staff will break out to edit strategies and make action plans.

Together in one place, we can cross reference, challenge and support one another.

By the end of the day, we'll have a plan for how we will model our emerging community in coming days.

THIS WEEK AT EUCC

Sunday, May 30th

- 8:30am—Worship
- 9:45am—Church School
- 9:45am—Special Adult Ed with Steve Cutting
- 9:45am—Coffee Fellowship
- 11:00am—Worship

Monday, May 31

CHURCH OFFICE CLOSED

Tuesday, June 1st

- 10:00am—Orchard House Bible Study
- 12:15pm—Al-Anon Meeting (Fireside Room)
- 7:00pm—Phase 1 Building Committee Meeting

Wednesday, June 2nd

5:30pm—Sts C&F Weekday Mass

Thursday, June 3rd

- 9:30—WG Moms Connection (Fellowship Hall/Red Rm)
- 6:30pm—St. Louis Equality Dancers (Fellowship Hall)
- 7:00pm—Sts. C & F Book Club (Fireside Rm)

Friday, June 4th

Saturday, June 5th

9:00am—Endowment Committee Mtg (Fireside Rm)

Sunday, June 6th

12 noon—ALL CHURCH PICNIC!!!

We're collecting your old shoes!

How many old shoes are cluttering your closets? We can help you get rid of them! For our Water with Jesus unit, we're participating in the Water for Kenya project.

Started by folks in the St. Louis metro area, the Shoeman Water Project www.shoeman.com states:

“Shoeman Water Project is a ministry of Eagle Wings Ministries, a non-profit 501 (c) 3 charity, working to alleviate as much human suffering as possible and in the process, maximize fun. The Project's work provides affordable shoes in the developing world, life-giving, fresh, clean drinking water to those in need and a splashing good time for the kids.”

From the web site: “The shoes will be sold locally and then shipped to South America's used shoe market for people who cannot afford new shoes where they can barter or purchase a pair of used shoes. We use the proceeds to buy a drilling rig and towing vehicle and drill 30-40 wells in Kenya per year!”

What to do:

- Shoes (any style, new or old) must be in pairs.
- Tie the strings together or put a rubber band around them.
- Bring them to church in the next two weeks. We'll have a collection box.

June 6: Church school activities outdoors (weather permitting) at 9:45 sharp to conclude our water unit. We need assistants to help with some of the activities. Contact Debbie, Darcy or Kathy.

June 6: Church picnic at noon!

Join us at Shannondale Community Center, a UCC community in southern Missouri, for a relaxing weekend.

Options include outdoor camping and bunk beds in the lodge. Communal meals are available (shared cost).

A Saturday canoe trip on the Current River is fun for all ages and there is much to explore in and around the camp.

A signup sheet is on the table in the Narthex.



Sunday Morning

Shared Ministry Opportunities — Signups are in the Narthex

Ministry		Today	Next Week
Liturgists	Read the Morning Scripture and Prayers	David Meirs (8:30am)	
Shepherds	Help Carolyn play with our preschoolers	Bardelmeier	Joe Kelly
Crib Room Assistants	Help Carole play with our babies (two shifts)	Jan Ittner	Marie Keath
Ushers	Greet worshipers and (at 11:00am) collect offering	Joli Baker Earl Brown Ken Ulmer Paul Huppert	Sandy Bowe David Faulkner Geno and Lola Contestabile
Coffee Hour	Provide finger foods and greet community between services	Birthday Celebration	Open
Money Counters	Count the weekly offerings and enter into database	Brenda Detrick Barb Schroeder	Norma Leuthauser Sandy Bowe

Pastoral Team
Katherine Hawker,
Marilyn Stavenger, Al Schon
Pastoral Assistant, Sue Schindel

Music Team
Donita Bauer,
Jill Thompson, Darcy Swanson

Field Ed Student, Deborah McBride
Sunday AM, Carolyn Held
Nursery, Carole Janssen
Campus Minister at Webster, Laurel Hayes

President, Laura Bardelmeier
Secretariat, Paul Mack
Financial, Ken Ulmer
Facilities, Wynn Miller
People, Debbie Gregg
Community, Patty Pelikan, Janet Rundquist
Servant, Lori Winter, Laura Evans
Learning, Ruth Panhorst
Worship, Lil Lau

Endeavoring to maintain the unity of the Holy Spirit in the bond of peace, we are open to and affirming of each child of God, recognizing that we are called to be as one reconciled Body with members of every race, gender identity, ethnic origin, sexual orientation, class, age and physical or mental health and ability.

Evangelical United Church of Christ
204 E. Lockwood Webster Groves, MO 63119
314-968-1727

inquisitive. inclusive. intentional. intimate. inspiring.
The Other Evangelical
www.evangelicalucc.org